

OperVise

Sustainable Operations



2 |

Why Choose Us?

Ease of Operation

Due to the fact that the engineering infrastructure provided by the combination of our experience in automation and IoT, especially with our data center design experience, is the basic building block of this software.

Operational Sustainability

Sustainability is provided Proactively with our software in Data Center. Not only practice & inform, as well as the proactive approach is provided by OperVise.

Advance Work Flow Tracking

With dynamic reports and customize work order types, a company-specific structure is created. Workflow processes are monitored end-to-end from personnel recruitment to training, maintenance, and work orders.

Smart Event Notification for All Facility Steps

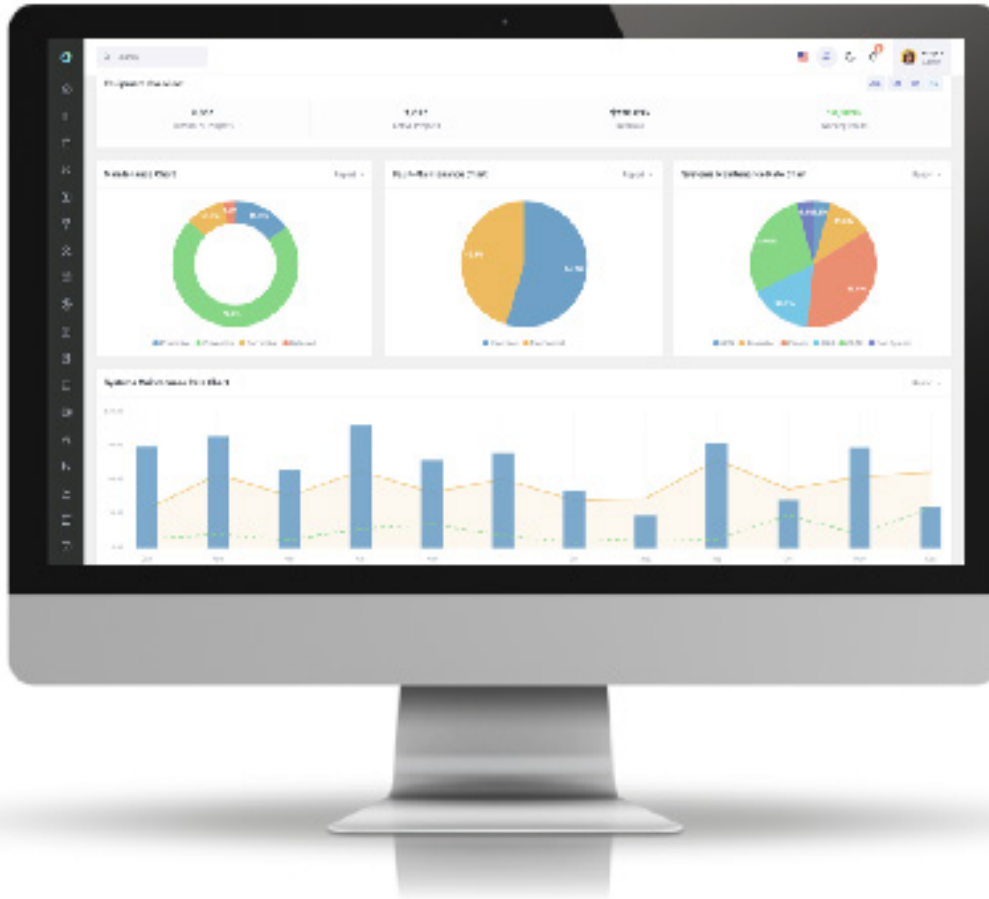
Within the Data Center, in order to prevent the work assignments made to the employee from being noticed and to prevent incorrect assignments, the notifications of all work orders with event notification are shared with the stakeholders with their details.

Managing of All Operations in One Software

All infrastructures are managed with Opervise Software as advanced integrated interface, not only maintenance and work order process. OperVise is provided comprehensive software solution which is integrated between training-reports-asset management-vendors-work orders-policies and procedures-maintenance process-staff management.

4 |

Products



6 Work Order Management

8 Maintenance Management

10 Staff Management

11 Capacity Management

12 Failure Analysis

13 Dynamic Reports

14 Software Modules



6 | Work Order Management

OperVise work order management tool provides user friendly work order track and performance analysis interface.

Project Creator
Create or edit your project details simply such as location, IT load, Electrical Loads. All project details connect automatically sub-tools.

Customize Work Order Types
OperVise provides internal library which can be editable. Each data center has individual requirements and OperVise included work order types can be editable according to your facility.

User Assignment
All work orders shall be assigned for proactive data centers. OperVise is provided smart user assignment rules and each work order can close with only designated user.

Work Order Track
Maintenance, training, meeting, calibration and all work order types are monitored and reported with OperVise.

Work Order Management

Custom Work Order Types

Each Data Center has different dynamics. OperVise is provided customize work order types according to your data center requirements.

Performance Analysis

Work load balance is highly critical for data center management. OperVise work order reports are supported scheduled performance analysis reports for comparison of staff work load, maintenance planning and data center FTE forecasts.

Advance Work Order Track with Smart Calendar

OperVise work order creator is provided automatic work order creation with simply and basically. All data center management team needs to track work orders and FTE counts. Smart Calendar features will be simplest way of track work orders.





8 |

Maintenance Management

OperVise is not only a CMMS software. OperVise is integrated data center operation software which is included maintenance types, calibration requirements tracks, and creatable procedural forms.

Preventive Maintenance

All preventive maintenances(planned maintenance) will be created automatically as per your schedule. Maintenance activities are integrated maintenance types and work orders. OperVise is provided automatically to create preventive maintenance according to your data center equipment.

Predictive Maintenance

Thermal Camera, Battery Measurements, Engine Generator Oil & Fuel Analysis, and all predictive maintenance activities can create automatically in the predictive maintenance tool. OperVise is designed for Proactive-Practice-Inform principles. Each failure and corrective action is logged in a database.

Corrective Maintenance

Either old genre or new generation data centers are encountered many failures. Manage your operational or equipment faults with the OperVise corrective maintenance tool.

Deferred Maintenance

The Deferred maintenance rate(<10%) is the requirement of sustainable operations for data centers.

Maintenance Management

Calibration Track

Calibrated specialist tools are required for each maintenance type. Manage your calibration period and calibration certificates.

Track Your Maintenance with Smart Calendar or Dynamic Reports

Work load balance is highly critical for data center management. OperVise work order reports are supported scheduled performance analysis reports for comparison of staff work load, maintenance planning and data center FTE forecasts.

Activity Notifications

Manage all maintenance work order status from Opervise Activity Notifications. All maintenance statuses are automatically sent as notifications and logged in the Opervise database.





10 |

Staff Management

Staff is one of the most critical elements for a data center. In order to obtain efficiency and stability from the staff, Opervise provide workload management, scheduled shift management, personnel performance analysis, training performance analysis and automatic shift organizer for each employee.

Workload Management

Workload balance and overtime is critical management item for data center staff management and forecasting. FTEs and workload management reports manage within Staff Management Tools.

User Assignment

Each work order shall be designated, by qualified employees. Opervise is assigned automatically each work order and training to the qualified employee.

Shift Schedule Management

Many data center operations are creating shift schedules manually. Opervise provides automatically shift schedule creation of your data center technical staff according to workload, designation, and off-days for employees.



Capacity Management

Opervise provides information about the nominal, current and maximum reachable capacities of IT, electrical and mechanical equipment in the data center. Capacity management tool warn before unexpected capacity cases.

IT Space & Load Capacity

The Opervise IT Load Management tool provides IT Capacity detailed reports such as Physically Spaces of Cabinets, Electrical Loads of Cabinets, etc.

Electrical Load Capacity

The Opervise Electrical Load Management tool provides Electrical Capacity detailed reports such as Transformer-Generator-UPS-LV Panels-MV Boards-Circuit Breakers-Batteries, etc.

Capacity & Load Management

Manage your Data Center Physically-Electrical-Mechanical loads with advanced reports. The Advance Capacity Reports interface provides an annually-monthly-daily comparison of loads for a data center. Either equipment or system capacity management can be managed within Opervise Capacity Management Tool.



12 |

Failure Analysis

OperVise provides analysis and reports to prevent future errors with the information it receives from vendors and lessons learned from past errors.

Knowledgebase

OperVise stores the information it receives from vendors and the documents of the equipment. Provides filters so that they can be easily viewed when needed.

Lessons Learned

The Lessons Learned section, where the stages of the problems solved and the lessons learned from these problems are stored, will offer a rich infrastructure for future problems.



Dynamic Reports

Dynamic Reporting system can be integrated into many systems such as Work Order, Maintenance, Asset Management and etc. since OperVise's primary focus is Data Center and Work Order Management is the most frequently used system of the facility, the dynamic reporting system's primary focus is the Work Order Management. But of course, it can also be adapted to the desired system upon request.

Interactive Filtering

It can be said that filtering is one of the most important factors in reporting systems. Showing only the desired data and minimizing the effort to reach the desired data increases the user experience. At this point, all necessary filters are presented interactively in the dynamic reporting system.

User-Friendly Interface

User-friendly software is exactly what it sounds like: it's a technical solution that is easy for all (or at least most) people to use to get their jobs done. This doesn't mean the software isn't complex and feature-rich behind the scenes or that anyone can step up to a computer and operate it correctly. In this sense, besides its functionality, our interface offers a user-friendly use with its modern, simple and ease of use visuals.

Data Export Options

Although all information is still in a reporting system, it is not enough just to be viewable. Reports must be presentable and exportable. OperVise offers report output in the most common excel and pdf formats used for reporting.

Do it in one page

Normally, only the display function works on the reporting page. OperVise offers viewing, editing and deletion functions as options on a single page.

Software Modules

Opervise Software Solutions have many software modules for each data center infrastruxure. Create your software architecture with Opervise modules or extension packages.

	Standart	Enterprise	Premium
Work Order Management	✓	✓	✓
Vendor Management	✓	✓	✓
Maintenance Management	✓	✓	✓
Staff Management	✓	✓	✓
Dynamic Reports & Dashboards	✓	✓	✓
Advance Reporting	✗	✓	✓
Capacity Management	✗	✓	✓
Training Management	✗	✓	✓
Asset Management	✗	✗	✓
Form Creator – Policies & Procedures	✗	✗	✓

OperVise Modules

OperVise Standart

OperVise is not only standart CMSS software. OperVise is provided Work Order Management-Staff Management-Vendor Management-Dynamic Reports interface with OperVise Standart. OperVise Standart can be used for small or medium size data centers.

OperVise Enterprise

OperVise Enterprise version is included Standart modules which is also include Advance Reporting, Training Management and Capacity Management. OperVise can be used for all size data centers for sustainable operations.

OperVise Premium

OperVise Premium version is included all OperVise functions and modules. Entirely manage your data center with OperVise Premium.

OperVise Extensions

OperVise

Advance Reporting Module

Automatic and schedule reports are highly critical for data center operations. Advance reporting module has many report template and library such as training, equipment & staff performance, maintenance reports.

OperVise

Asset Management Module

Data Center Asset Management has many complicated documentation. OperVise Asset Management module is included all Electrical-Mechanical-IT-Spare Parts as simple and better operations.

OperVise

Library Package

Each data center has many equipment as electrical-mechanical-IT and spare parts which are complex and complicated. Equipment specifications should be correct for sustainable operation. OperVise technical experts can create your project equipment with all specifications as tailor made.